

ThermalOrth[®]
Philosophy



ThermalOrth[®]
Philosophy

BUTTON FORMING STEP 1 & STEP 2

2nd and 3rd classes inter-maxillary elastic tractions



By courtesy of Dr. Park & Dr. Kim

Intrusion



By courtesy of Nicola Bardaro

Extrusion



By courtesy of Antonio Licandro

Myo-therapy



By courtesy of Dr. Fabiola Fort



These are pliers to make buttons for inter-maxillary elastic tractions in a short time, to keep or improve 2nd and 3rd classes at the end of the treatment; to make buttons for intrusions, for extrusions, for myo-therapy, etc

Upper and lower central incisors intrusion with elastic tractions on buttons:

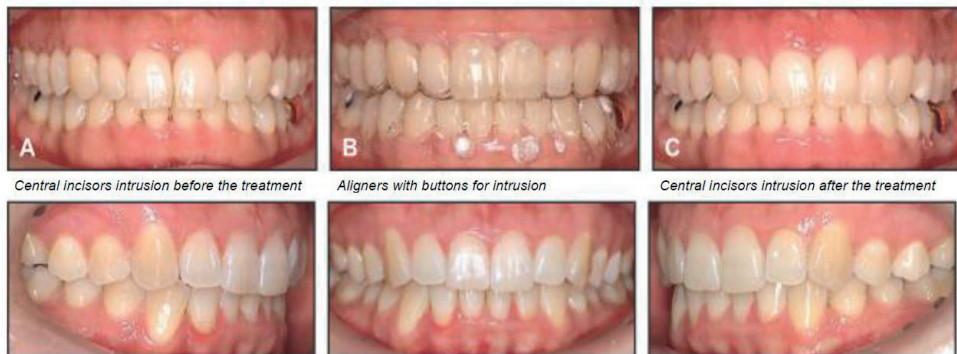


Fig. 13 Follow-up records taken three years after end of treatment.

By courtesy of Dr. Park and Dr. Kim (South Korea)

RETENTION

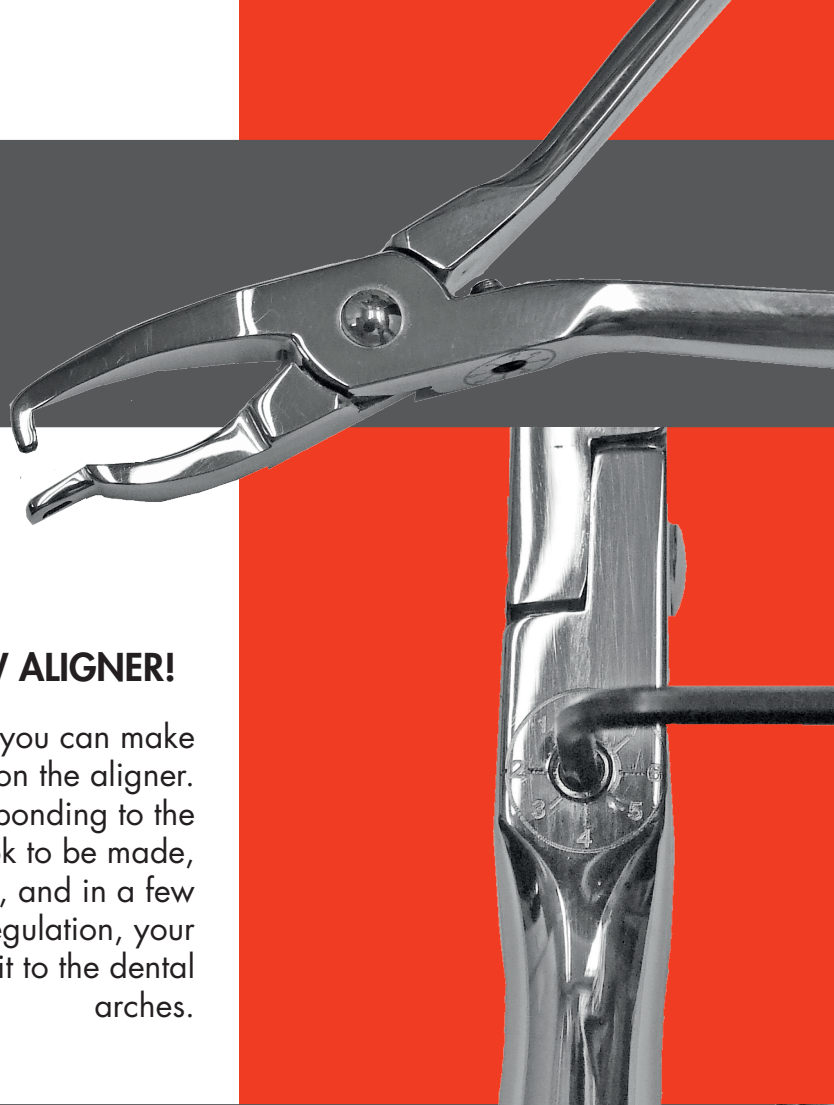
If the aligner is not stable, forces are not transmitted effectively and you don't get the patient's compliance, so you have to make a new one.

TODAY YOU DON'T NEED TO MAKE A NEW ALIGNER!

Adams Plastic Clasps



With Retention Plier, you can make Adams clasps directly on the aligner. Choose the value corresponding to the size of the hook to be made, on the graduated scale, and in a few seconds of thermoregulation, your aligner will perfectly fit to the dental arches.



FLATTENING

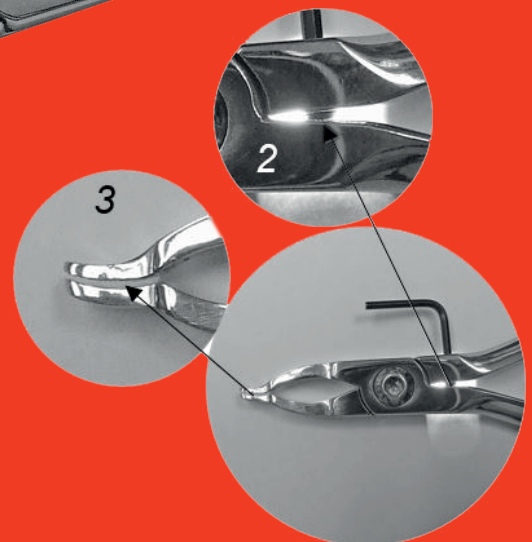
If you made an Activation point in an incorrect position or if you want to cancel an activation point or a button, you don't need to replace the aligner.



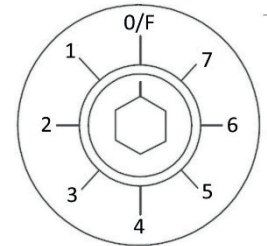
With Flattening Plier you can recondition the aligner surface, by restoring the initial state of the plastic.

IT'S VERY EASY, IN 3 STEPS!

- 1 - Block the plier on the aligner
- 2 - Turn the key clockwise
- 3 - Flattening is calibrated, ready to use.



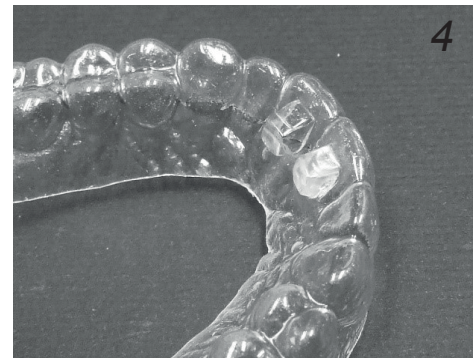
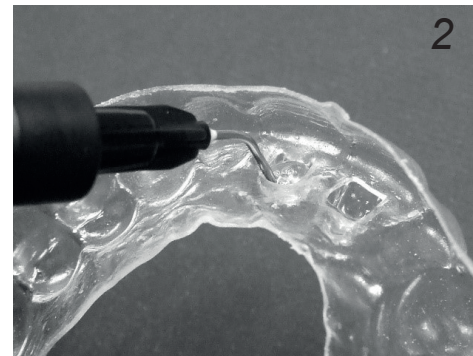
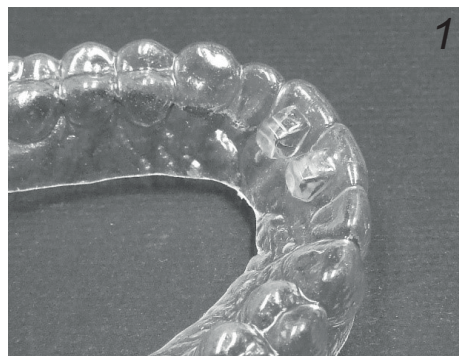
BITE PLANE



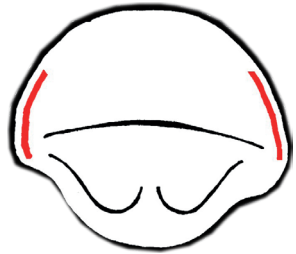
In case of deep bite, it is possible to increase the vertical size by creating a bump on the incisors back, instantly, thanks to the Bite Plane design.

Choose the optimal value on the graduated scale, thermoregulate the tip with iThermal and you get the planned bite plane (1).

Now you have to strengthen the front of the aligner by inserting a special clear light curing resin (2, 3, 4).



LATERAL



It is easy to open and close spaces by using Lateral plier; its special design allows you to make excellent activation points in the mesial and distal areas.

Choose the value corresponding to the size of the activation point to be made, on the graduated scale and activate the thermoregulation process with iThermal. However, firstly you have to neutralize the black hole area by using Flattening Plier, to facilitate the tooth movement.

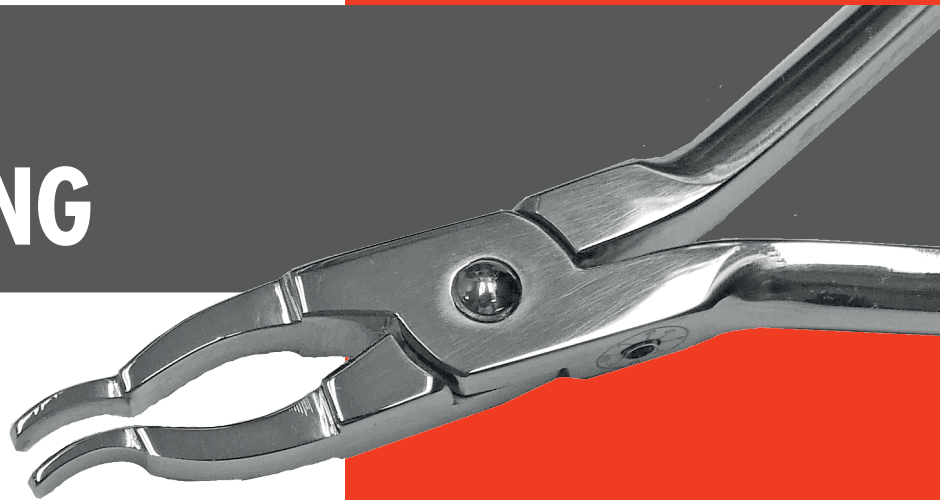


Lateral Activation Points

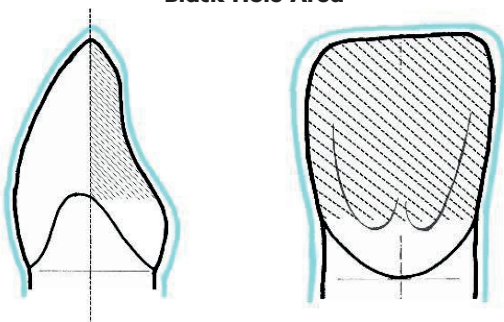


SPACING

Spacing plier is the tool to control the black hole area. It makes space inside the aligner in a few seconds of thermoregulation.



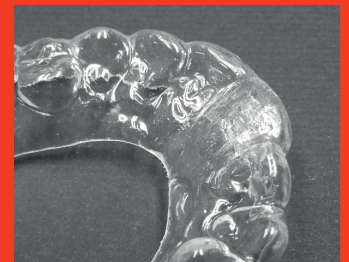
Black Hole Area



Before



After

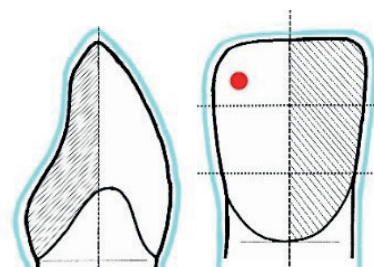
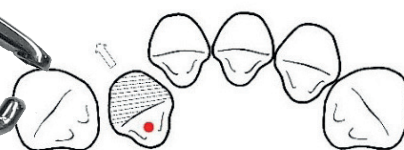




ACTIVATION

SMALL, MEDIUM & LARGE

Activation Pliers design makes it easy to work: you can place them in the tiniest spaces of the aligner and make an unlimited series of operations: lingual and vestibular movements, rotations etc



You can make activation points on lower incisors by using the Small plier, you can work on laterals by using the Medium plier, while on centrals and cuspids you can act by using the Large plier.

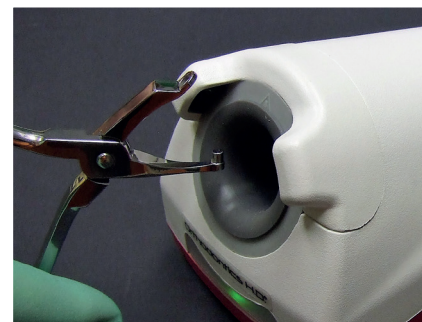
REMARK: as a general rule, before making activation points, you need to neutralize the black hole area by using Spacing plier



iTHERMAL

iThermal is a hyper technological equipment that enables the orthodontist to modify ALIGNERS with ease, simplicity and precision because it grants the correct thermoregulation times.

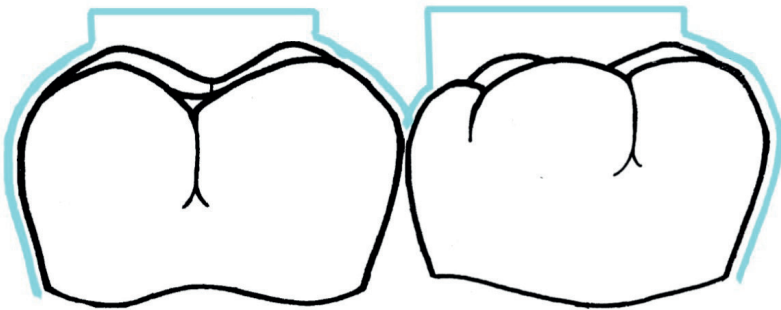
iThermal "senses" pliers in a few seconds and creates an homogeneous temperature on the tip; this is the essential condition for a proper thermoforming.



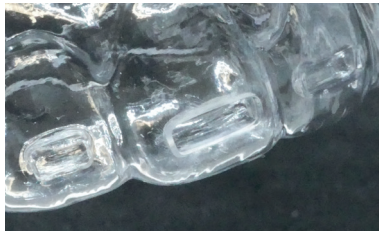
REAR BITE



Rear bite plier is the tool that allows the orthodontist to make a bite plane on the aligner, directly in the dental practice and in a few seconds of thermoregulation, thus avoiding any waste of time and reducing the duration of the treatment



TORQUE SMALL & LARGE



Torque control in the front dental segments, in patients who wear aligners, has always been a problem for orthodontists. Today, with Small and Large Torque pliers, operators can use very sophisticated tools to instantly make modifications on aligners, to optimize the treatment.

